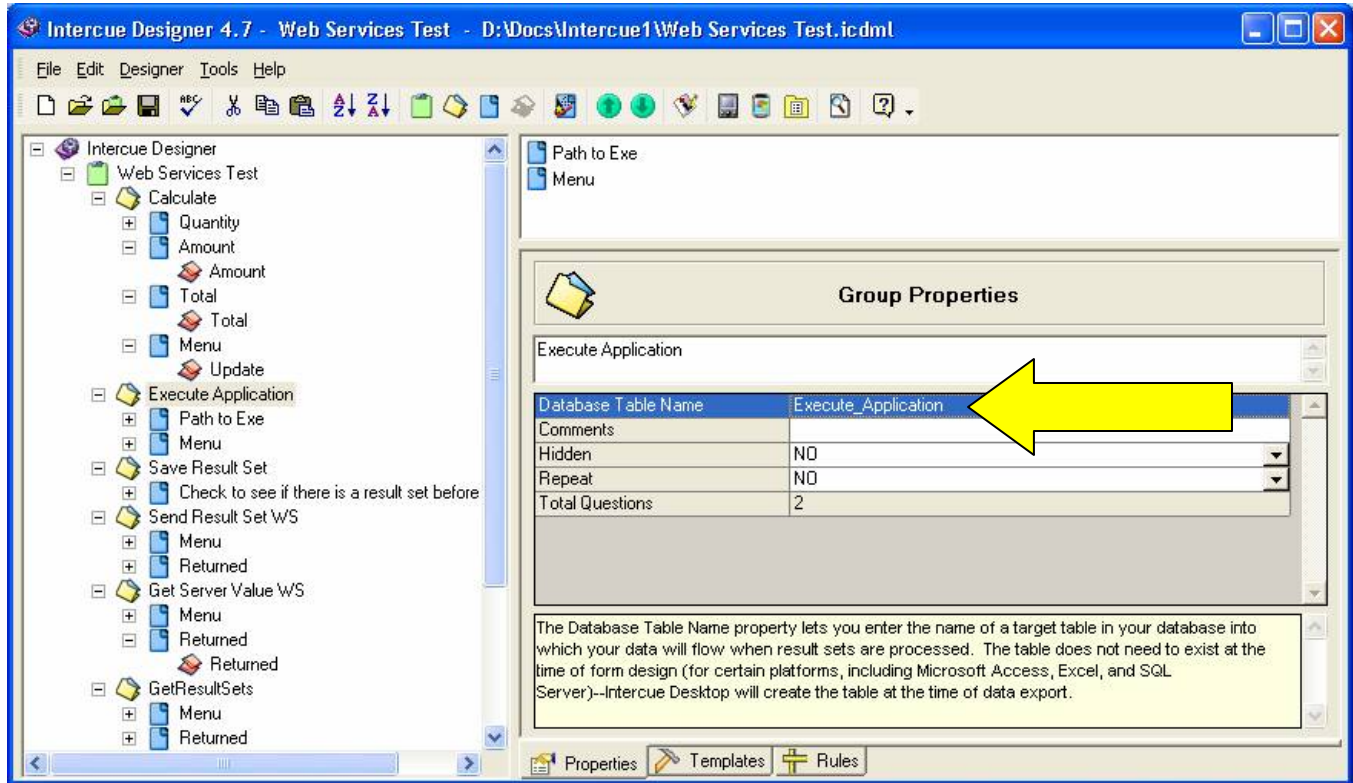




## Q. Exporting Results Sets from Intercue Mobility Suite 4.7 after upgrading from 4.5

A. This is simply a new feature that makes exports seem to not work, but they do work. What is happening is that to get a “table” (group) to export, you MUST fill in a “Database Table Name” in the Group properties. See the following example:



If the “Database Table Name” is not set, the group is not exported. This feature gives the user full control of the export, and nothing goes to the database unless this value is set.

The same goes for the “Database Field Name” property. Fields are not exported to the database unless the property is set on a Question level.

This was a much requested feature, but may be confusing to a user migrating to the new version.